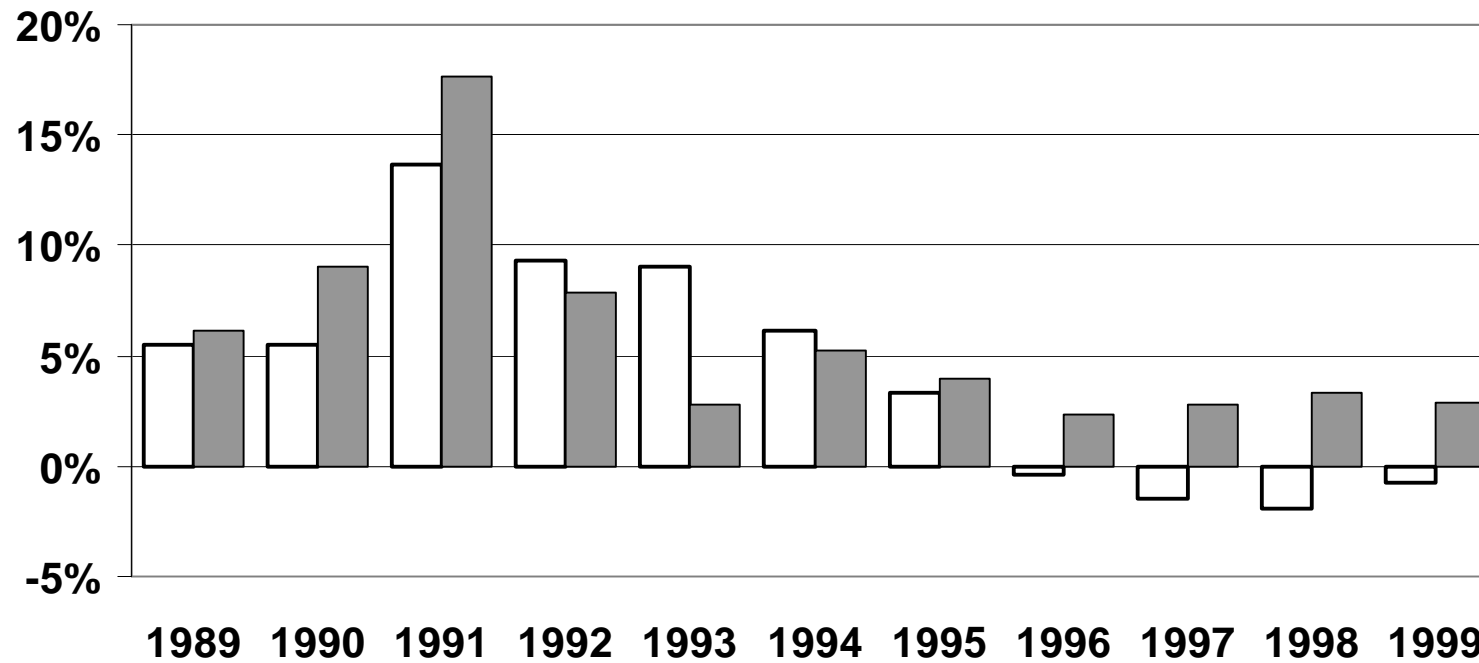


# The german property and liability insurance market

(Premium income 1999: 83,0 bn DM)

GDV

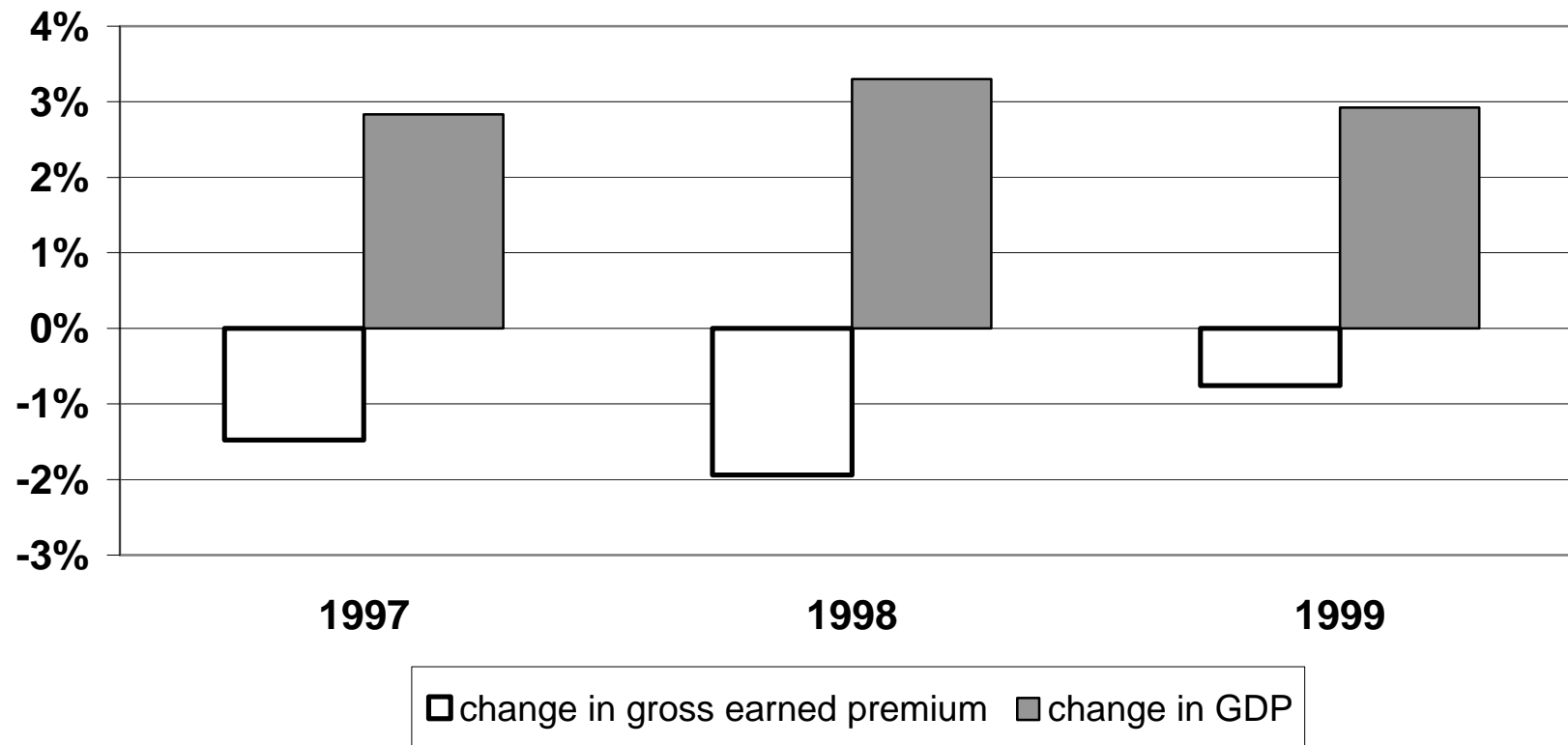


□ change in gross earned premium ■ change in GDP

# The german property and liability insurance market

(Premium income 1999: 42.43 bn Euro)

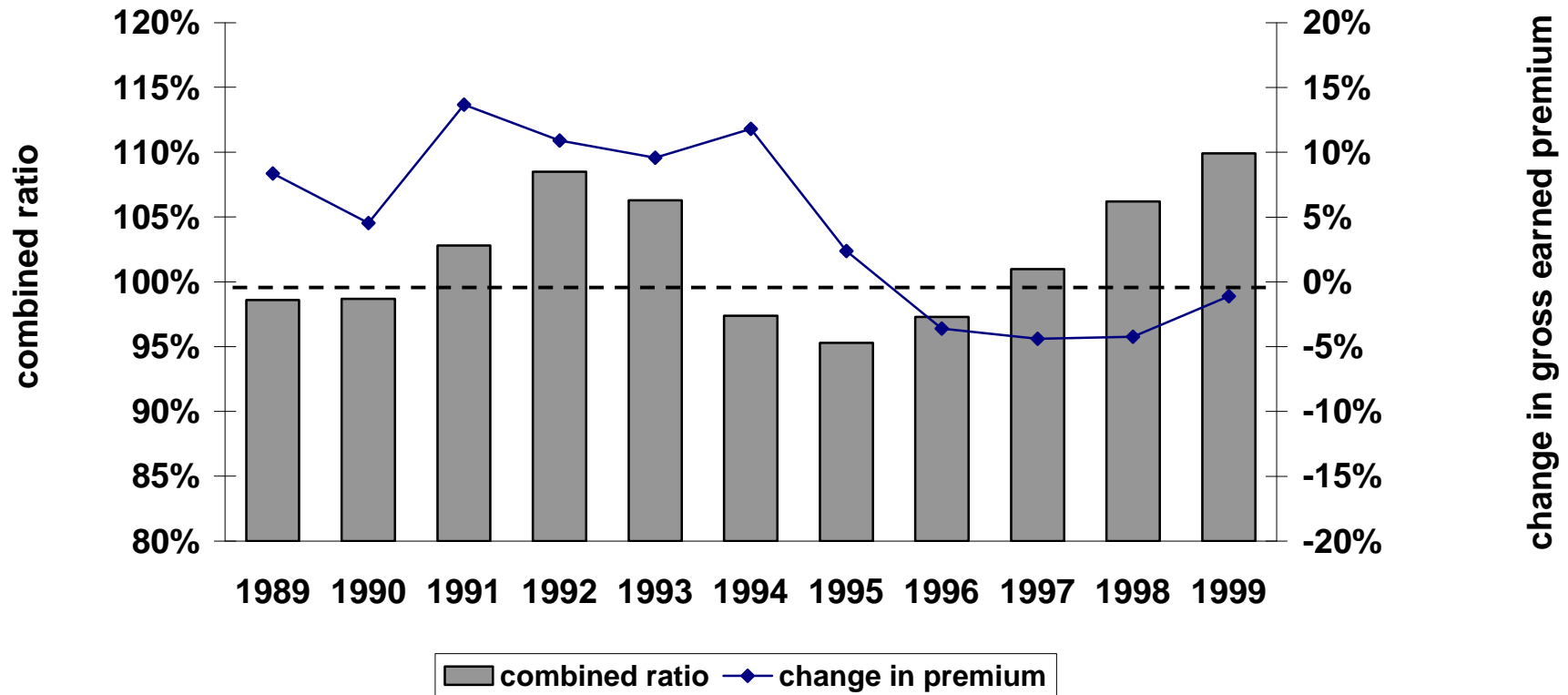
GDV



# Motor insurance

(premium income 1999: 38,8 bn DM)

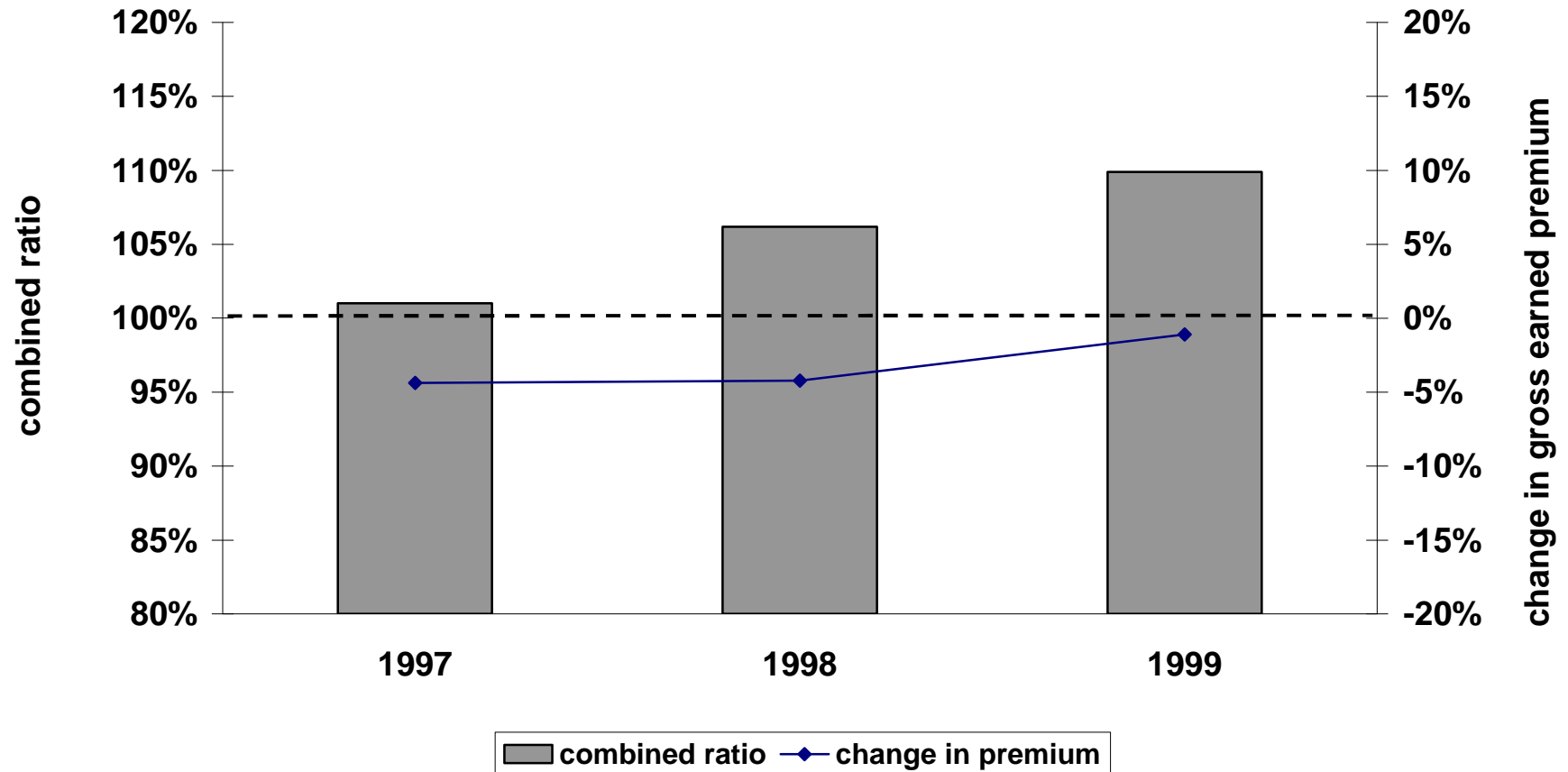
GDV



# Motor insurance

(premium income 1999: 19.81 bn Euro)

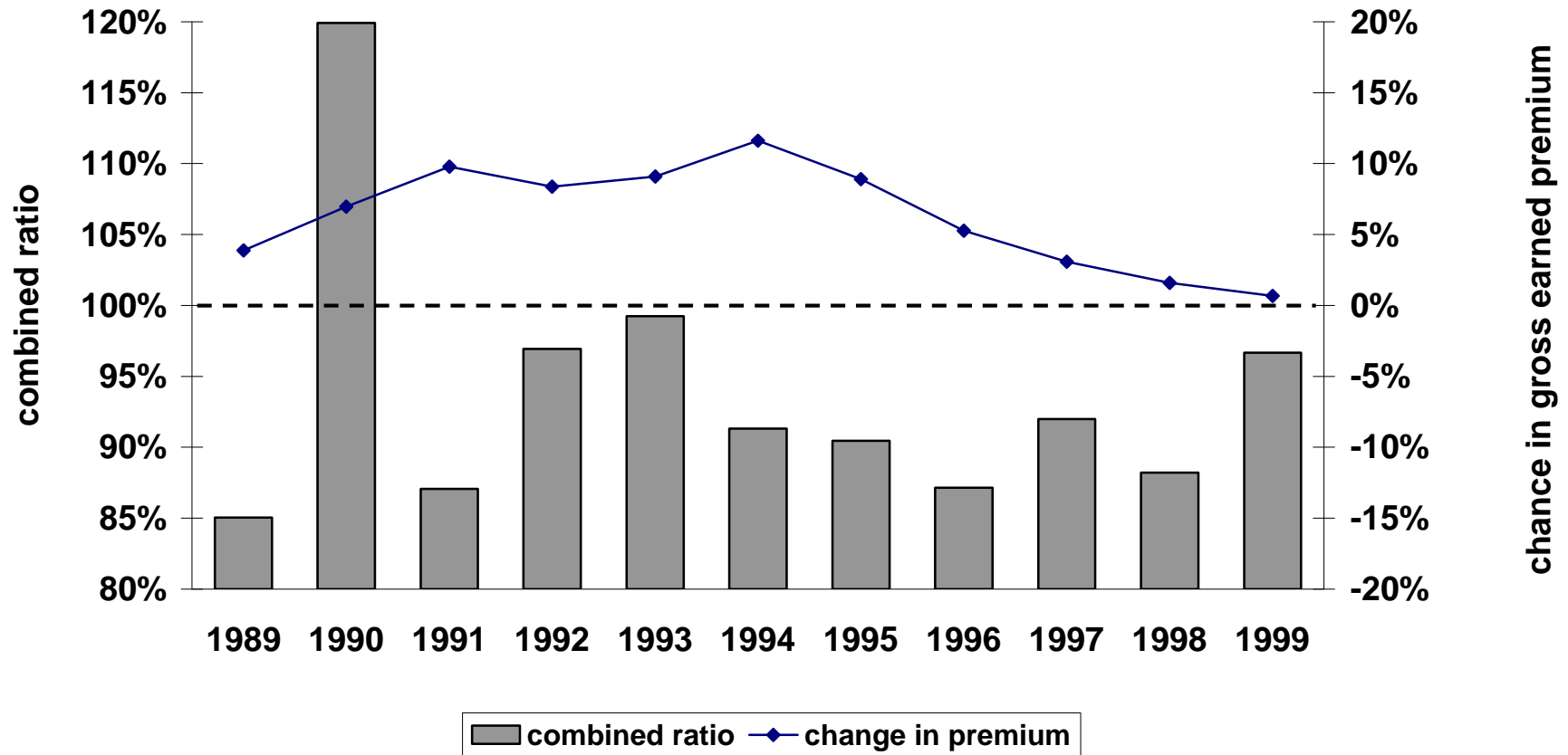
GDV



# Private property

(premium income 1999: 12,45 bn DM)

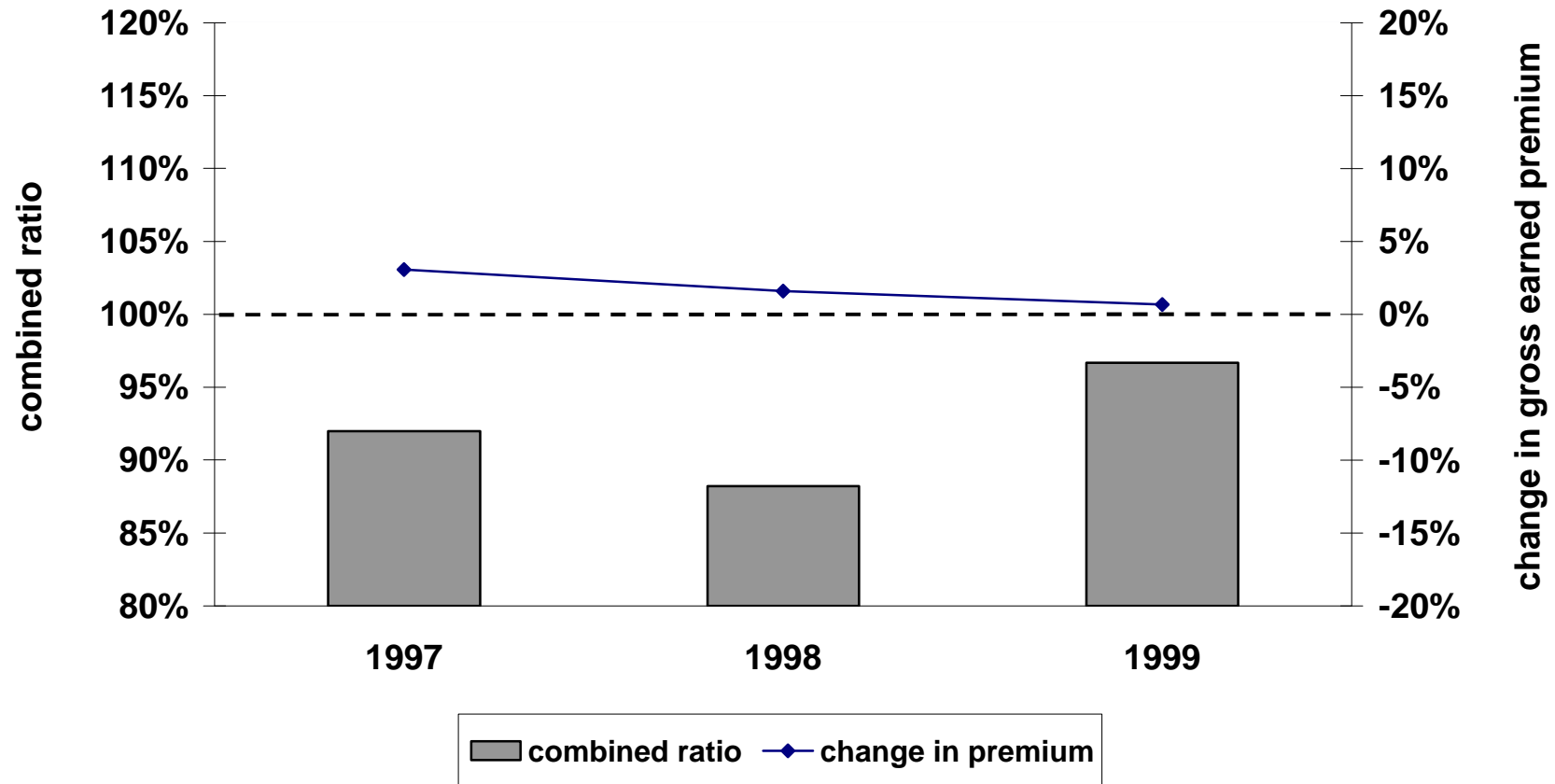
GDV



# Private property

(premium income 1999: 12,45 bn DM)

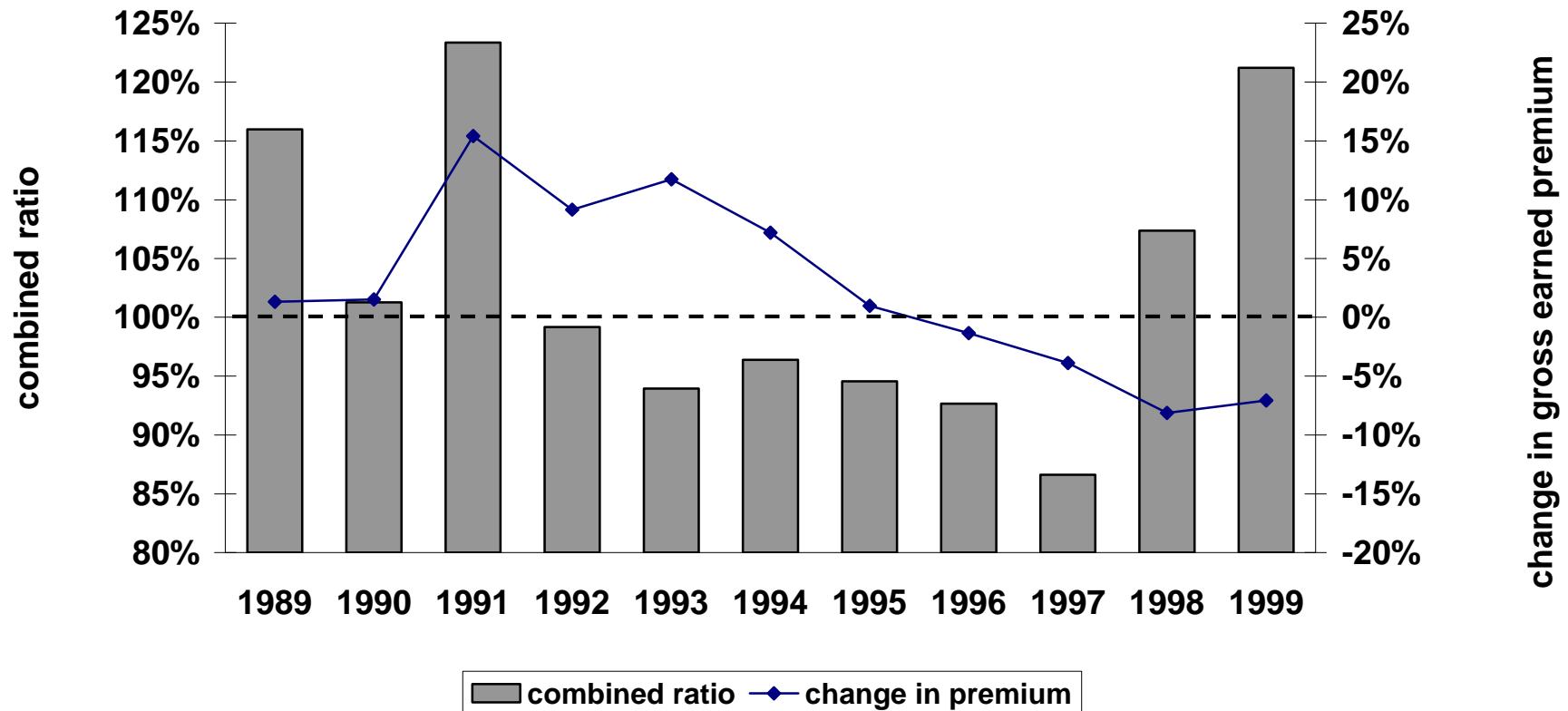
GDV



# Industrial property

(premium income 1999: 6,16 bn DM)

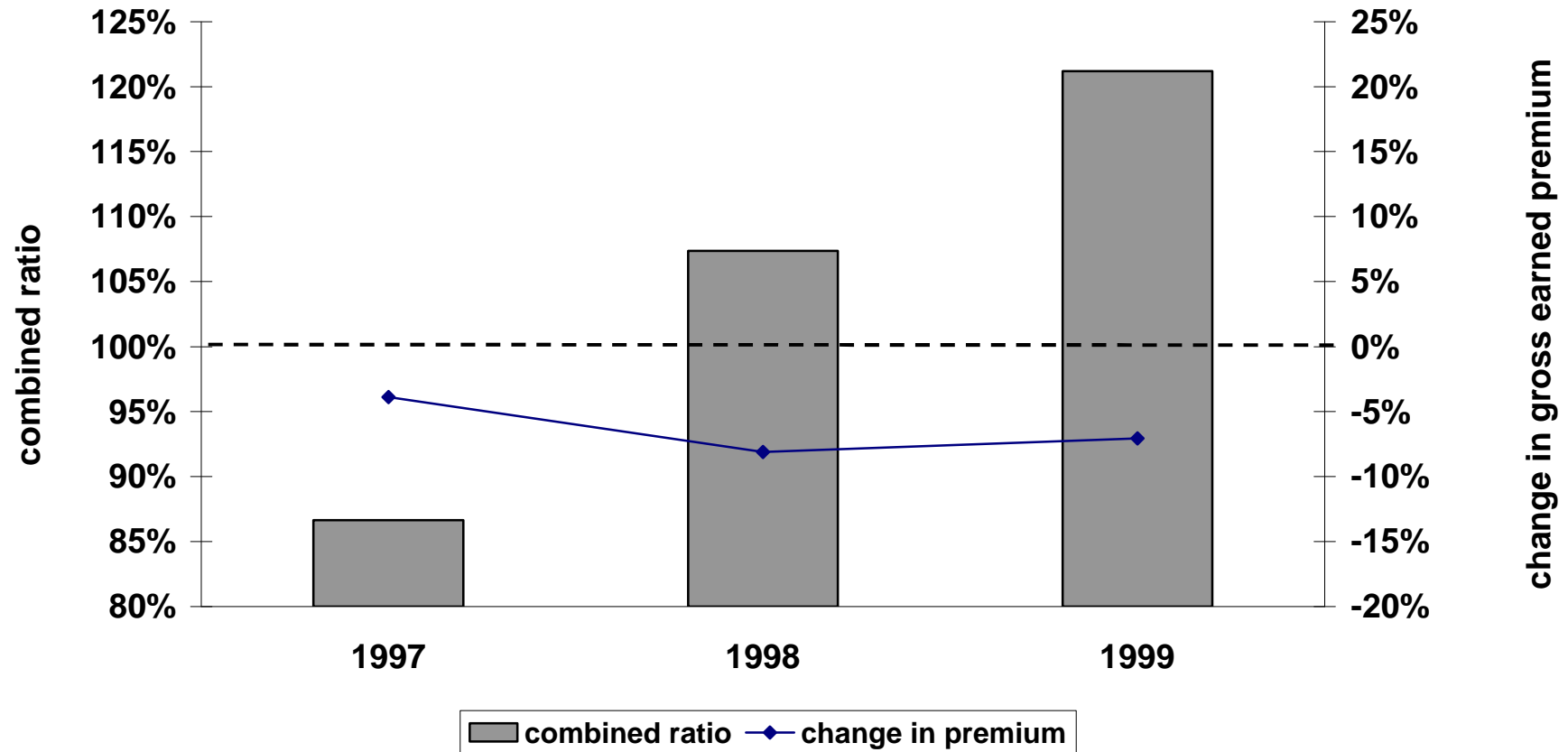
GDV



# Industrial property

(premium income 1999: 3.15 bn Euro)

GDV

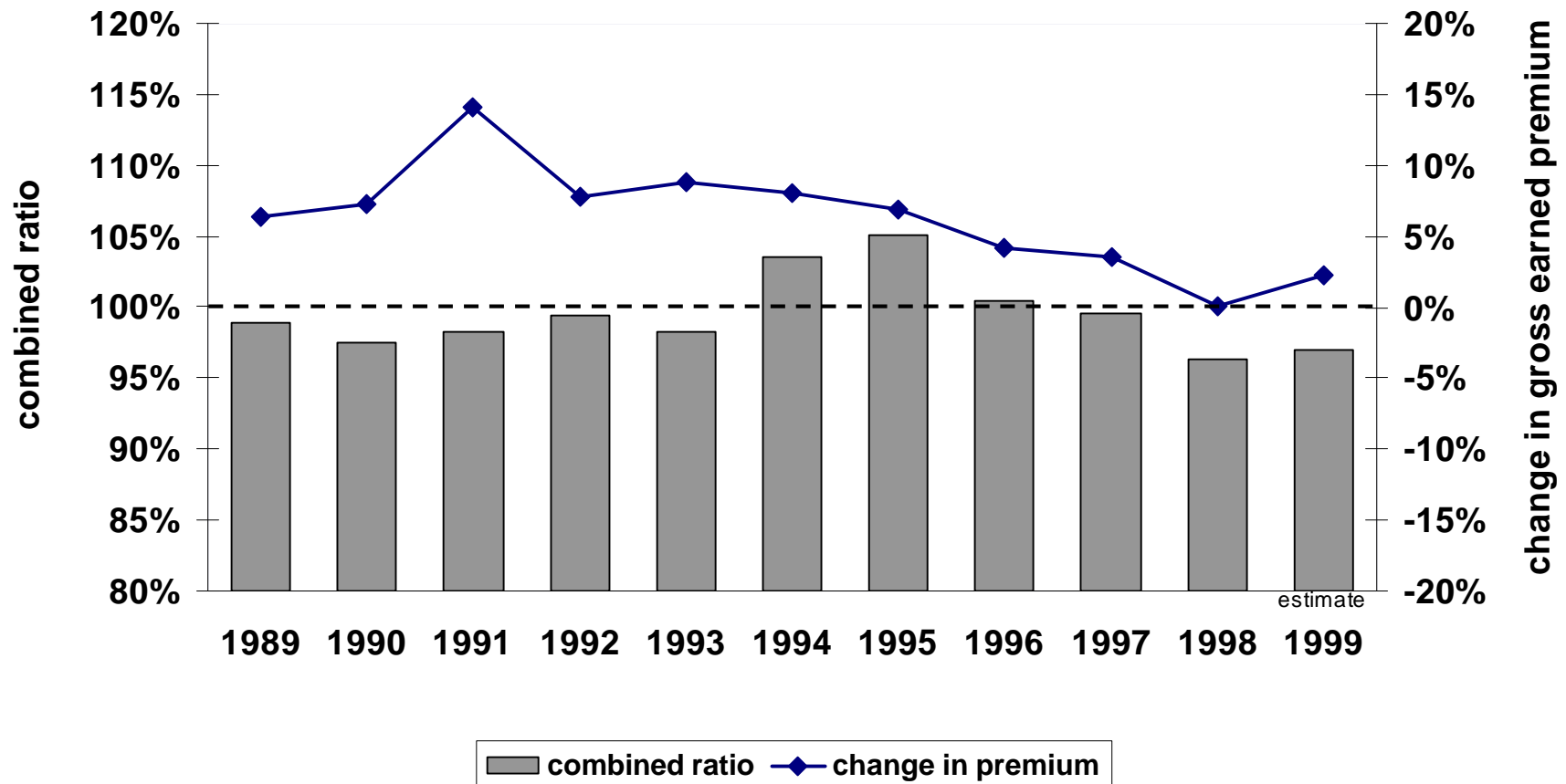




# General liability

(premium income 1999: 12,6 bn DM)

GDV



# General liability

(premium income 1999: 6.42 bn Euro)

GDV

